



**REGIONAL SPECIALISED METEOROLOGICAL CENTRE-TROPICAL CYCLONES, NEW DELHI
TROPICAL WEATHER OUTLOOK**

DEMS-RSMC TROPICAL CYCLONES NEW DELHI DATED 08.09.2021

TROPICAL WEATHER OUTLOOK FOR NORTH INDIAN OCEAN (THE BAY OF BENGAL OF BENGAL OF BENGAL AND ARABIAN SEA) VALID FOR NEXT 120 HOURS ISSUED AT 0600 UTC OF 08.09.2021 BASED ON 0300 UTC OF 08.09.2021.

BAY OF BENGAL:

YESTERDAY'S WELL MARKED LOW PRESSURE AREA OVER SOUTHEAST MADHYA PRADESH & ADJOINING PARTS OF NORTH VIDARBHA HAS WEAKENED INTO A LOW PRESSURE AREA AND NOW LIES OVER SOUTHWEST MADHYA PRADESH & NEIGHBOURHOOD. IT IS LIKELY TO MOVE WEST-NORTHWESTWARDS DURING NEXT 24 HOURS.

ANOTHER LOW PRESSURE AREA IS LIKELY TO FORM OVER NORTH AND ADJOINING CENTRAL BAY OF BENGAL AROUND 11TH SEPTEMBER, 2021.

SCATTERED LOW AND MEDIUM CLOUDS WITH EMBEDDED INTENSE TO VERY INTENSE CONVECTION OVER NORTH & CENTRAL BAY OF BENGAL AND SOUTH ANDAMAN SEA AND MODERATE TO INTENSE CONVECTION LAY OVER SOUTHEAST BAY OF BENGAL NORTH ANDAMAN SEA.

PROBABILITY OF CYCLOGENESIS (FORMATION OF DEPRESSION) DURING NEXT 120 HRS:

24 HOURS	24-48 HOURS	48-72 HOURS	72-96 HOURS	96-120 HOURS
NIL	NIL	NIL	NIL	NIL

ARABIAN SEA:

BROKEN LOW AND MEDIUM CLOUDS WITH EMBEDDED INTENSE TO VERY INTENSE CONVECTION LAY OVER NORTHEAST ARABIAN SEA OFF GUJARAT COAST. SCATTERED LOW AND MEDIUM CLOUDS WITH EMBEDDED MODERATE TO INTENSE CONVECTION LAY OVER GULF OF KUTCH GULF OF CAMBAY EASTCENTRAL ARABIAN SEA AND WEAK TO MODERATE CONVECTION LAY OVER WESTCENTRAL ARABIAN SEA.

PROBABILITY OF CYCLOGENESIS (FORMATION OF DEPRESSION) DURING NEXT 120 HRS:

24 HOURS	24-48 HOURS	48-72 HOURS	72-96 HOURS	96-120 HOURS
NIL	NIL	NIL	NIL	NIL

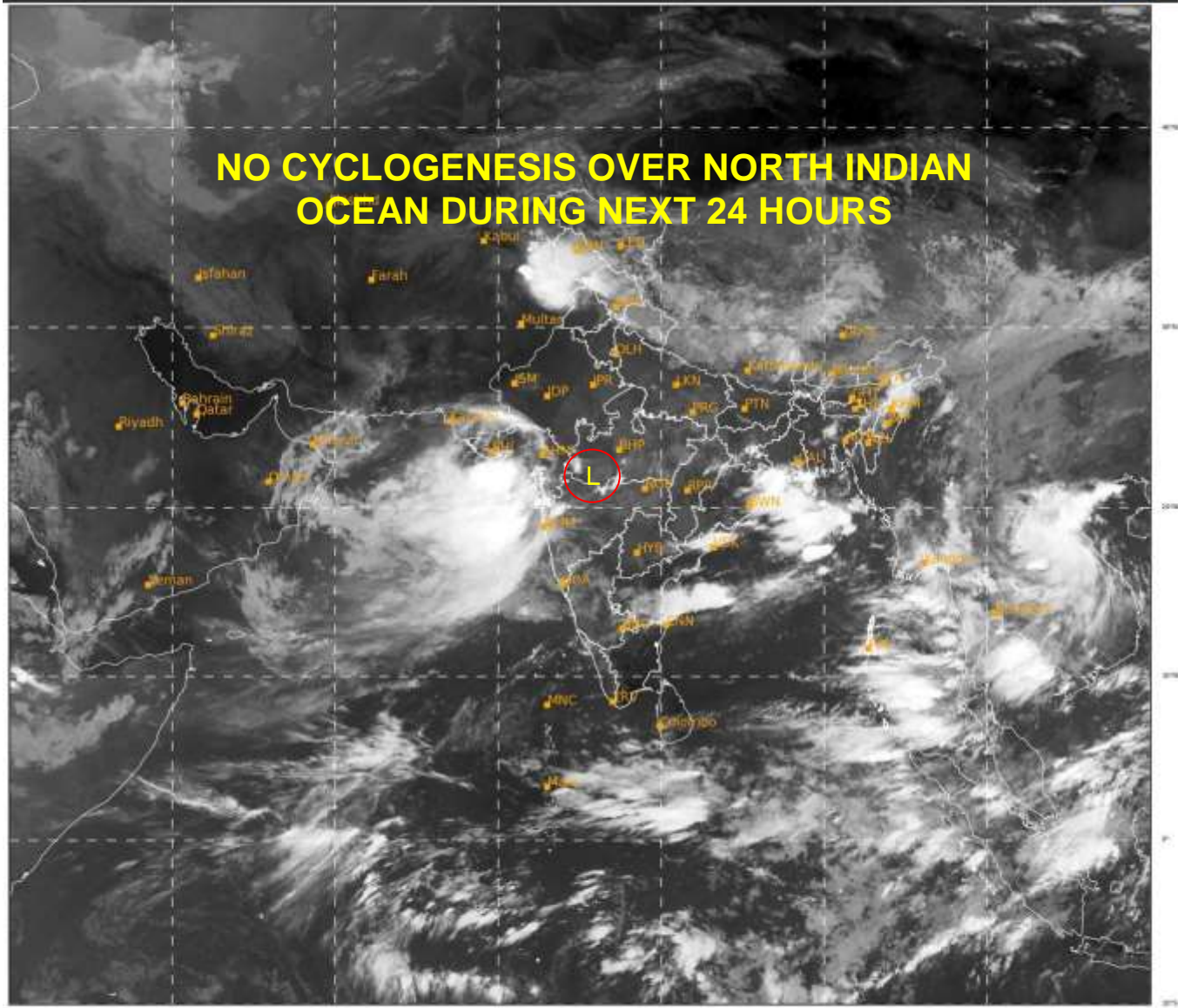
REMARKS: NIL

SAT : INSAT-3D IMG
IMG_TIR1 10.8 um
LIC Mercator

08-09-2021/(0300 to 0327) GMT
08-09-2021/(0830 to 0857) IST



NO CYCLOGENESIS OVER NORTH INDIAN OCEAN DURING NEXT 24 HOURS



400

933

IMD, DELHI

PROBABILITY OF CYCLOGENESIS (FORMATION OF DEPRESSION):NIL: 0%, LOW: 1-25%, FAIR: 26-50%, MODERATE: 51-75% AND HIGH: 76-100%
This is a guidance Bulletin for the WMO/ESCAP Panel Member countries., Please visit respective National websites for Country specific Bulletins